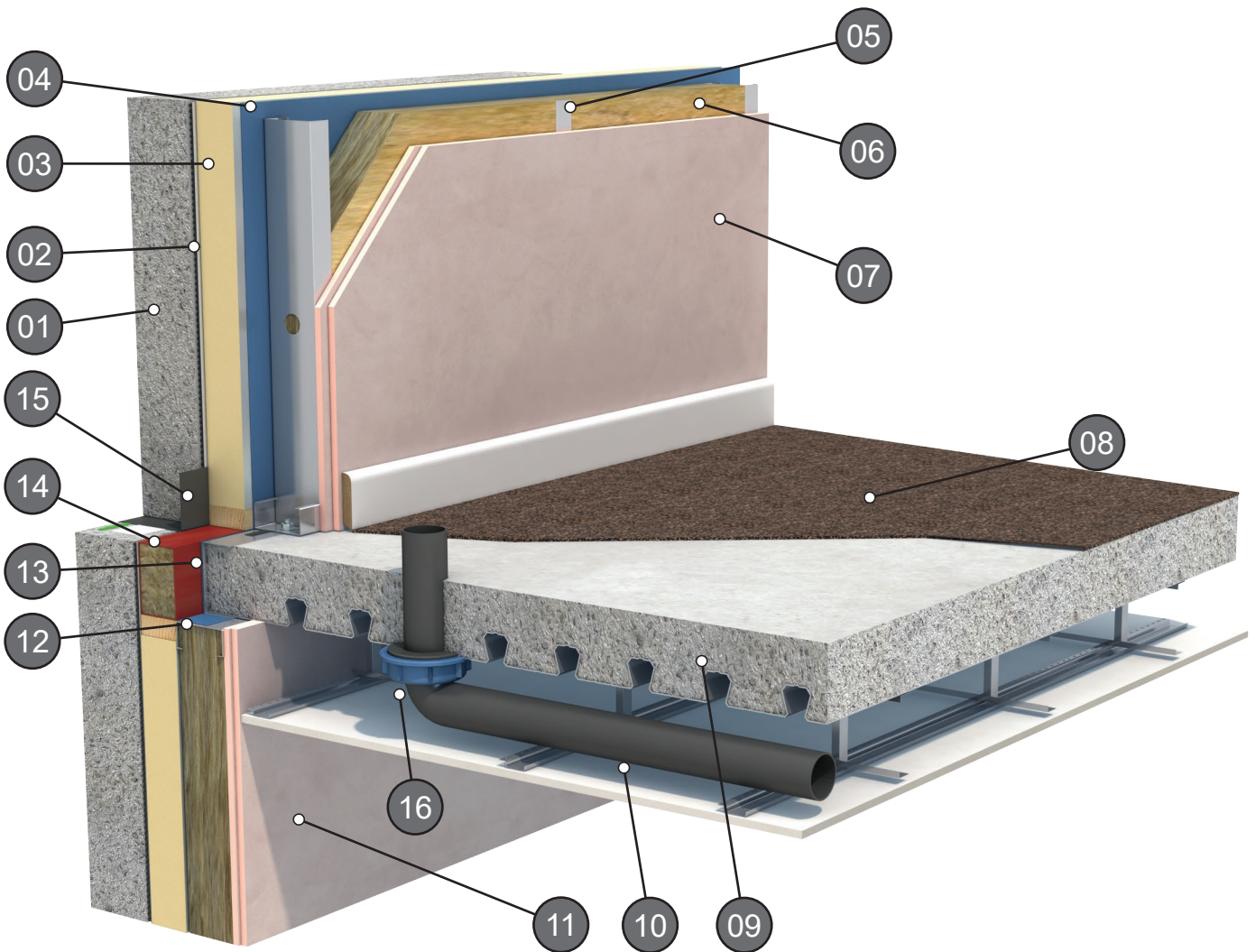


Composite Floor to Wall Junction



01. Precast concrete wall or other NSAI approved cladding system.

02. Residual cavity.

03. PIR Insulation.

04. Selected AVCL.

05. LGS metal stud.

06. Stone mineral wool insulation.

07. 2No. layers 12.5mm Type F Plasterboard to provide REI 60 External wall in accordance with table 4 fire performance requirements.

08. Appropriate resilient soft covering.

09. Concrete poured into metal deck.

10. Suspended ceiling to specification.

11. 2No. layers 12.5mm Type F Plasterboard to provide REI 60 in accordance with Table 4 fire performance requirements.

12. Isolation strip between deck and LGS wall.

13. Composite Deck edge trim.

14. Cavity Barrier to specification fixed to timber battens.

15. DPC lapped over cavity closer.

16. Vertical services through compartment floor to have proprietary fire collar in accordance with TGD part B.